

**Abstract format – place your title here formatted as shown here in bold: use Times New Roman font and do not capitalise first letters or whole title**

RG Richards<sup>1</sup>, M Alini<sup>1</sup>, C Archer<sup>2</sup>

<sup>1</sup> [AO Research Institute](#), AO Foundation, Davos, CH. <sup>2</sup> [Connective Tissue Biology Labs](#), School of Biosciences, Cardiff University, Wales

**INTRODUCTION:** The proceedings will be typeset, for publication as a supplement in the eCM journal. Hence, abstracts **must** adhere to the contained style. **The required styles illustrated in this Microsoft WORD document, must be used as a template for production of abstracts, by replacing the relevant text with your own**, by cutting and pasting of unformatted text to maintain the present format. **IMPORTANT: DO NOT INTERFERE WITH HEADER OR FOOTER.**

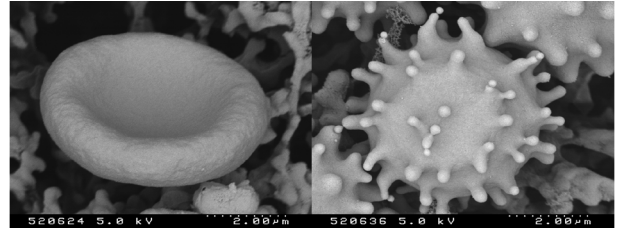
**METHODS:** All abstracts must be formatted to a **single A4 page** (210 x 297 mm). The top margin should be set to 15 mm, bottom margin to 25 mm, and left and right margins to 20 mm. The entire document is set to 2 columns with 10 mm of intercolumn spacing (giving a column width of 80 mm). **The body of the document should be set in 11 pt Times New Roman**, justified, with single line-spacing. Do not use fonts other than Times New Roman or Symbol in the document (including equations and figures).

*Title* should be in bold, styled as shown. *Authors* should be listed consecutively (as above) by initials and last name, punctuated as shown. Authors may be hyperlinked to the e-mail address (as shown above). *Affiliation* should be indicated with superscripted suffix Arabic numerals. Do not append degrees, professional designations, etc., to names. Affiliations should be listed consecutively and may be hyperlinked to a web page (as examples above). Sample reference entries [1-3] are given in the References section. References should be set as one block, as below, and a maximum of four references may be used.

**RESULTS:** Figures should use *Figure* style and have the caption below them. Tables should use *Table* style and have the caption above them. Figure and table caption styles are *FigCaption* and *TableCaption*, respectively. Scanned figures should have a minimum resolution of 200 dpi for an 80 mm figure width. Equations should use *Equation* style:

$$k(t) = \mu \exp(-\mu t/\eta) I(t) \quad (1)$$

and should be tab centred, with the number in parentheses on the right.



*Fig. 1: Images of cells in this case – please use the Picture Tools facility to compress the images to 200dpi for printing, before saving. Include Scale Line value if not already embedded in the image.*

*Table 1. Relative allocation and amount of resources in research.*

	Amount of Resources	Allocation Freedom
Industry	high	constrained
Academic	Low	unconstrained

**DISCUSSION & CONCLUSIONS:** **Abstracts must not exceed one page. Do NOT tamper with the header or footer.** Please submit the abstract as a Microsoft Word document. Only electronic submissions will be accepted. The abstracts may be submitted via e-mail (attachment) or post (IBM-compatible diskette or CD-ROM labelled with abstract title and corresponding author, one abstract per folder).

**REFERENCES:** <sup>1</sup> M. Ziegler (1991) *Essentials of Writing Biomedical Research Papers*, McGraw-Hill, Inc. <sup>2</sup> I.R. Spears, M. Pfliegerer, E. Schneider, et al (2000) *J Biomech* **33**:1471-77. <sup>3</sup> A.R Poole, M. Alini, and A Hollander (1995) Chondrocytes and cartilage destruction in *Mechanisms and Models in Rheumatoid Arthritis* (eds B. Henderson, J. Edwards, and R. Pettipher) Academic Press, pp 163-204.

**ACKNOWLEDGEMENTS:** This template was modified with kind permission from eCM Journal.